

## PME2020 如何从 PME 服务器导出证书

### 问题描述:

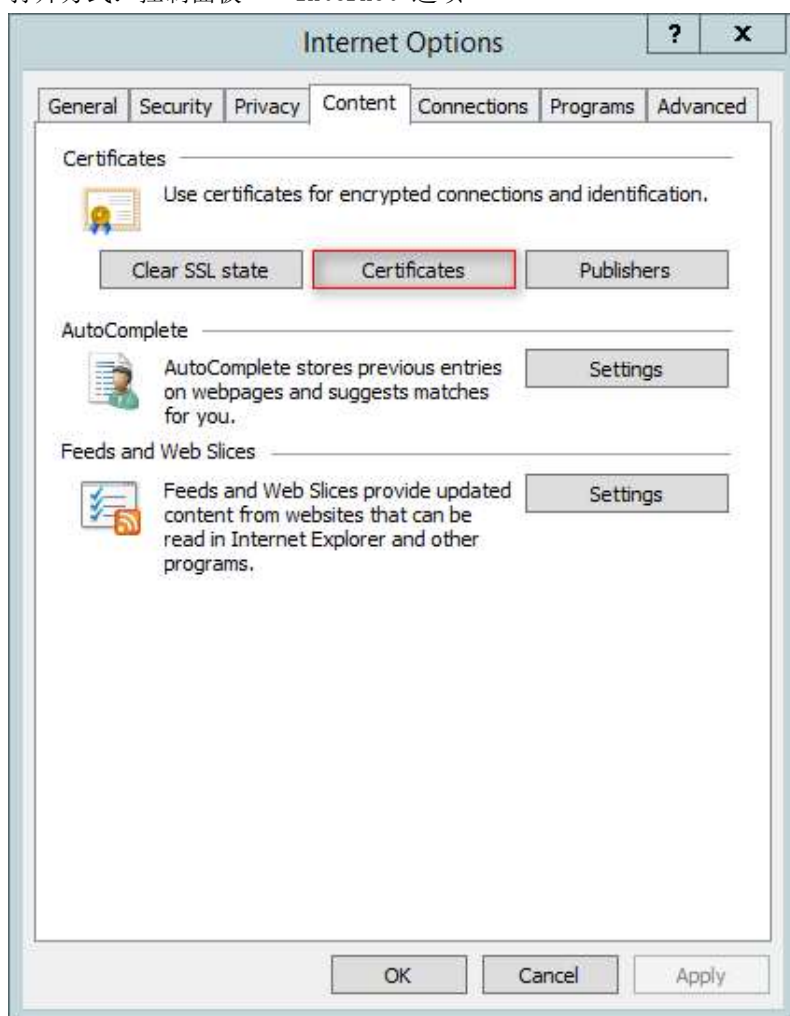
如何从 PME 服务器导出证书

### 解决方案:

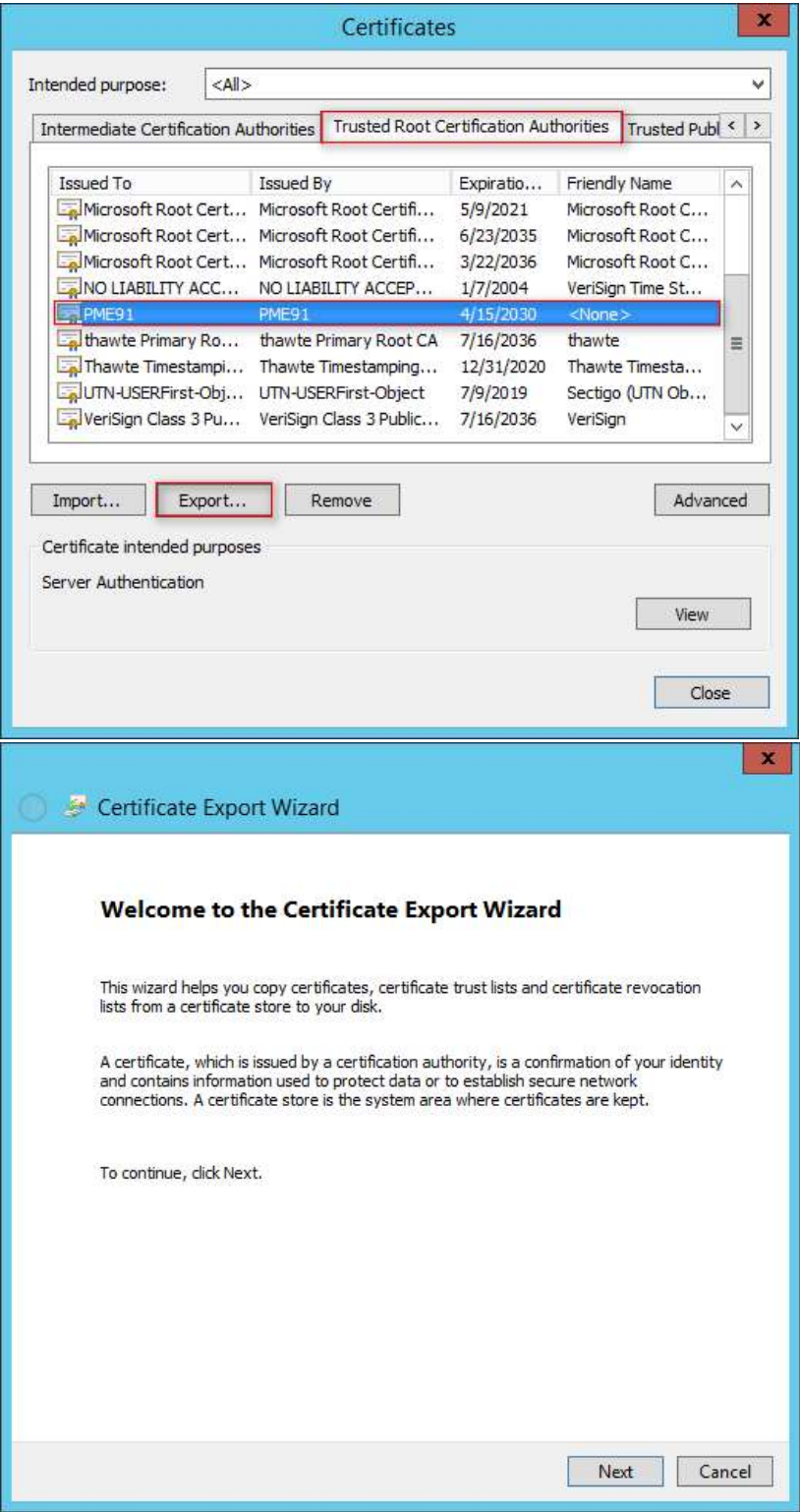
步骤如下:

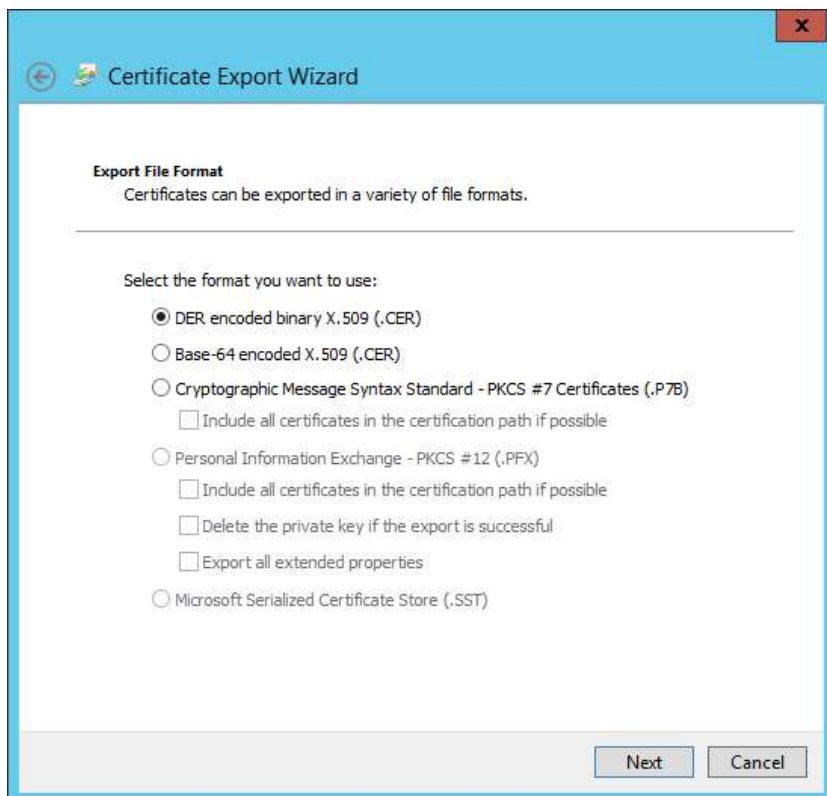
1. 打开 Internet 选项

打开方式: 控制面板 - Internet 选项



2. 点击 Content(内容) - Certificate - Trusted Root Certificate Authorities  
选中所需导出的证书, 按默认步骤导出即可。





**Certificate Export Wizard**

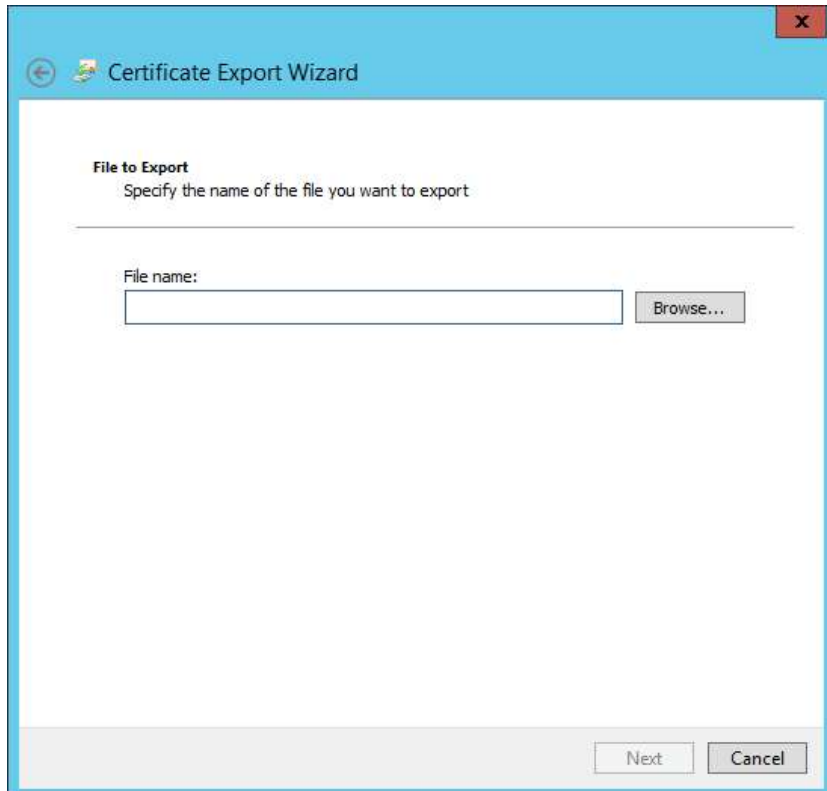
**Export File Format**  
Certificates can be exported in a variety of file formats.

Select the format you want to use:

- ☒ DER encoded binary X.509 (.CER)
- ☐ Base-64 encoded X.509 (.CER)
- ☐ Cryptographic Message Syntax Standard - PKCS #7 Certificates (.P7B)
  - ☐ Include all certificates in the certification path if possible
- ☐ Personal Information Exchange - PKCS #12 (.PFX)
  - ☐ Include all certificates in the certification path if possible
  - ☐ Delete the private key if the export is successful
  - ☐ Export all extended properties
- ☐ Microsoft Serialized Certificate Store (.SST)

Next Cancel

输入文件名，可与原证书同名。



**Certificate Export Wizard**

**File to Export**  
Specify the name of the file you want to export

File name:

Browse...

Next Cancel